

LOW-VOLTAGE CONTRACTORS / AUSTIN, TX

Mission-critical networks require Premier support.

Premier DataCom designs, installs, and supports the Data Cabling, Security, AV, and Wireless Systems that the most demanding builds depend on.

We show up where execution risk is highest,
and where reputation matters most.

SCOPE OF SERVICES

Every line in the low-voltage stack.

A capability-by-capability breakdown of what Premier DataCom delivers under each discipline. Every item below: installed, tested, documented, and warrantied by the same in-house team.

01 Structured Cabling

FOUNDATION LAYER

- A. Cat5e, Cat6, and Cat6A copper
- B. Single- & multi-mode fiber optic
- C. MDF / IDF telecom-room buildouts
- D. Certified installs with manufacturer warranty
- E. Data-center cabling & design

02 Security Systems

DPS LICENSED

- A. CCTV & IP camera systems
- B. NVR / DVR platforms
- C. Access control (Texas DPS licensed)
- D. Glass-break & motion sensors
- E. Remote monitoring & alerts integration

03 Audio / Visual

LEADING SUPPLIERS

- A. Conference AV systems
- B. Ceiling speakers & arrays
- C. Digital signage and video walls
- D. Zoom & Teams Rooms

04 Wireless & DAS

VERIFIED ON SITE

- A. Cellular DAS
- B. ERRCS (emergency responder radio)
- C. Heat-mapping & site surveys
- D. Outdoor wireless bridge solutions
- E. Pre- & post-install wireless verification

ONE UNIFIED TEAM

Four disciplines. One team. Zero handoff risk.

Most low-voltage scopes get cut up across three or four sub-contractors. Cabling, security, AV, wireless – different companies, different schedules, different warranties. When something doesn't work on day one, the owner gets four numbers to call and four people pointing at each other. Premier runs all four in-house. **One team owns the design, the install, the documentation, and the day-one phone call.**

01 STRUCTURED CABLING

The backbone of every digital building.

Before a camera can see, a phone can ring, or a conference-room display can light up, there has to be cable in the walls. We pull it, terminate it, label it, and document it. Get this layer wrong, and every system that rides on it fails in ways the owner can't diagnose. Our cabling stays on the punch list at zero so the systems on top of it can stay there too.

02 SECURITY SYSTEMS

Enterprise-grade. Security licensed.

Now the building can see who comes in, what they touch, and when. We design cameras, access control, alarms, and remote monitoring to behave as one system—one head-end, one credential, one source of truth—instead of four products on the same wall. Licensed under Texas DPS for Security and Electrical, tied to the cable we've already pulled.

03 AUDIO / VISUAL

Conference rooms that work the first time.

AV is where a building feels finished or feels half-built. We design and commission the conference rooms, video walls, signage, paging, and Zoom and Teams Rooms that people use every day, and we hand them over working, not "mostly working." The same team that pulled the cable behind the wall stands behind the rack in front of it.

04 WIRELESS & DAS

Cellular connectivity you can rely on.

Coverage where copper doesn't reach, and where first-responder radios have to work, by code. Cellular DAS, in-building Wi-Fi, ERRCS, outdoor bridges, heat-mapping. We verify every install on-site before we leave, and the testing report goes into the closeout binder with the rest of the documentation. Day-one coverage you can hand to the building inspector.

One team. One scope of work. One number to call.

RELIABILITY

We show up where execution risk is highest.

HANDS-ON LEADERSHIP

Our leads have hands on plans *and* cables.

Premier's project leads aren't desk supervisors - they're working leads with hands on the install. RCDD-certified design oversight is embedded in every job, not bolted on. The same person who walked your job will be the one fixing anything that needs fixing.

FULLY CERTIFIED

Deep credentials behind every install.

RCDD on staff. Companywide OSHA 10, 30, and 300. MEWP (A & B), TWIC, Texas DPS licensing for Security and Electrical. Manufacturer certified across Panduit, Corning, Prysmian, Cisco, Biamp, Shure, Brivo, Nextivity, Hanwha, Axis, Verkada, Rhombus, and Turing.

FLEXIBLY DEPLOYED

Texas-based, nationally deployed.

Our crews work across the Texas metros every day, where we know the local AHJs, GCs, and inspectors. When a customer needs the same crew on a project outside Texas, we drive or fly. Recent out-of-state work spans Oklahoma City, North Carolina, Louisiana, and Mississippi.

CERTIFICATIONS

RCDD	DPS	TIPS	OSHA	TWIC	Manuf. Certs
------	-----	------	------	------	--------------

BY THE NUMBERS

99%

Projects completed on schedule

600+

General contractor and owner customers served

15

Years of successful business operations

<1%

Rework rate on closed-out projects

4

Service verticals under one roof

“ We don't bid every job. We bid the jobs we can be excellent on, and then we earn the next one. ”



FEATURED PROJECT

Teachers Retirement System of Texas

New Headquarters · Alpha & Bravo Phases

LOCATION

Mueller, Austin, TX

TIMELINE

2024 – 2026

CUSTOMER TYPE

Public Pension HQ

ROLE

Retained by Owner

THE BRIEF

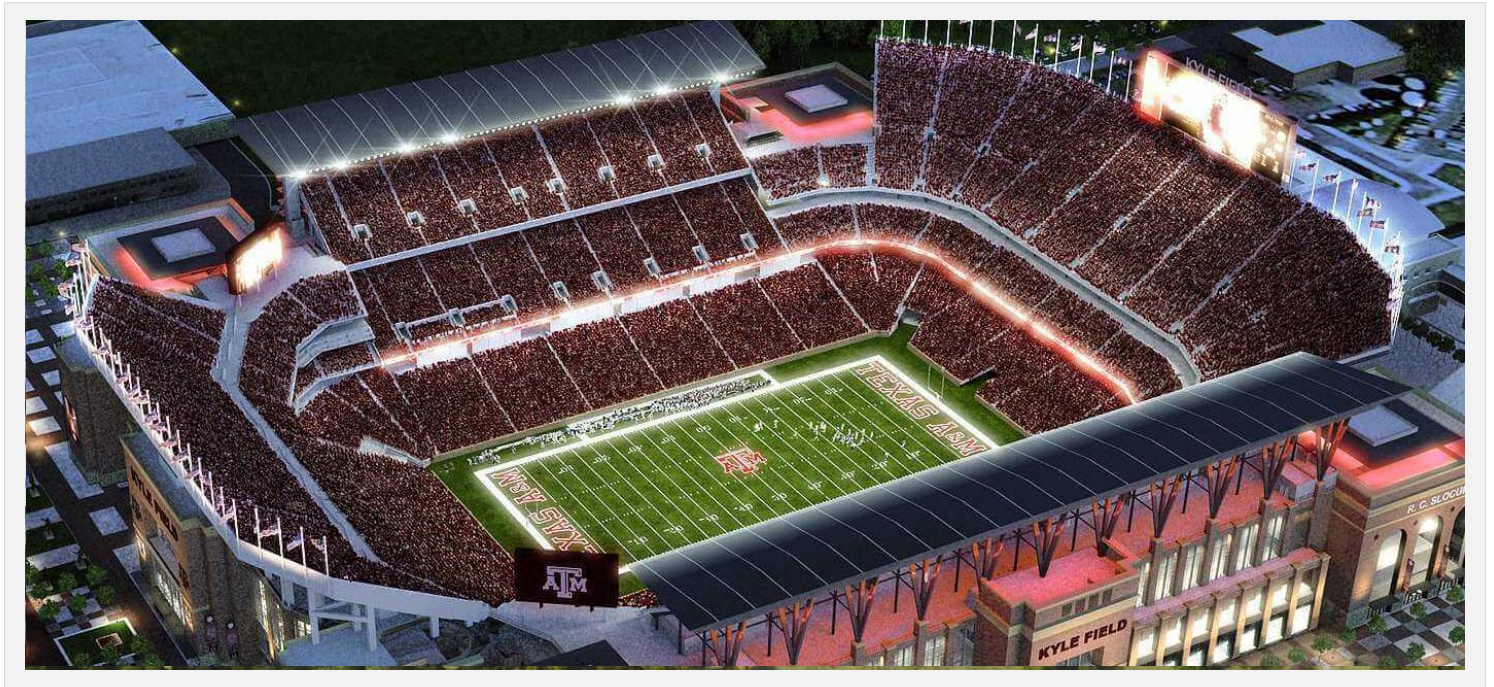
Texas's largest public pension fund, and one of the largest in the country, was bringing two new buildings online simultaneously. The work had to land clean: zero rework callbacks, audit-ready documentation, two phases sequenced without slipping the GC's calendar.

OUR SCOPE

Structured cabling and integrated security across both phases. Cat6A copper backbone, single- and multi-mode fiber, MDF and IDF buildouts in every zone, access control and CCTV integrated across multiple head-ends. RCDD-led design oversight from day one through final acceptance.

THE OUTCOME

Premier carried the punch list to zero before walk-down. The contract under the GC walked Premier into direct support contracts with TRS – a relationship that continues today across both buildings.



FEATURED PROJECT

Texas A&M

Kyle Field · PON & Triple Play Network Upgrade

LOCATION

College Station, TX

TIMELINE

2025 – 2026

CUSTOMER TYPE

Education

ROLE

Retained by GC

THE BRIEF

Kyle Field, the largest stadium in the SEC and the third-largest college venue in the country, needed a network refresh on a timeline that was non-negotiable. The work had to be staged, executed, and closed out before the next football season started; the venue does not have a second shutdown window. The project GC brought Premier on directly for the stadium network refresh.

OUR SCOPE

Passive Optical Network (PON) buildout plus 'Triple Play' video/voice/data convergence infrastructure across the stadium. Premier staffed dedicated crews out of Austin with per-diem and travel coverage for multi-week deployments, working to the in-stadium GC's sequencing and the owner's documentation requirements.

THE OUTCOME

Both PON and Triple Play scopes were delivered ahead of football-season turnover. Premier was re-engaged for follow-on stadium scope before the original work was closed out – the kind of re-award that only happens when the first job is delivered clean.



FEATURED PROJECT

Apple Capstone

North Austin Tech Campus · Capstone Phase II

LOCATION

North Austin, TX

TIMELINE

2026

CUSTOMER TYPE

Public Company

ROLE

Retained by LV Lead

THE BRIEF

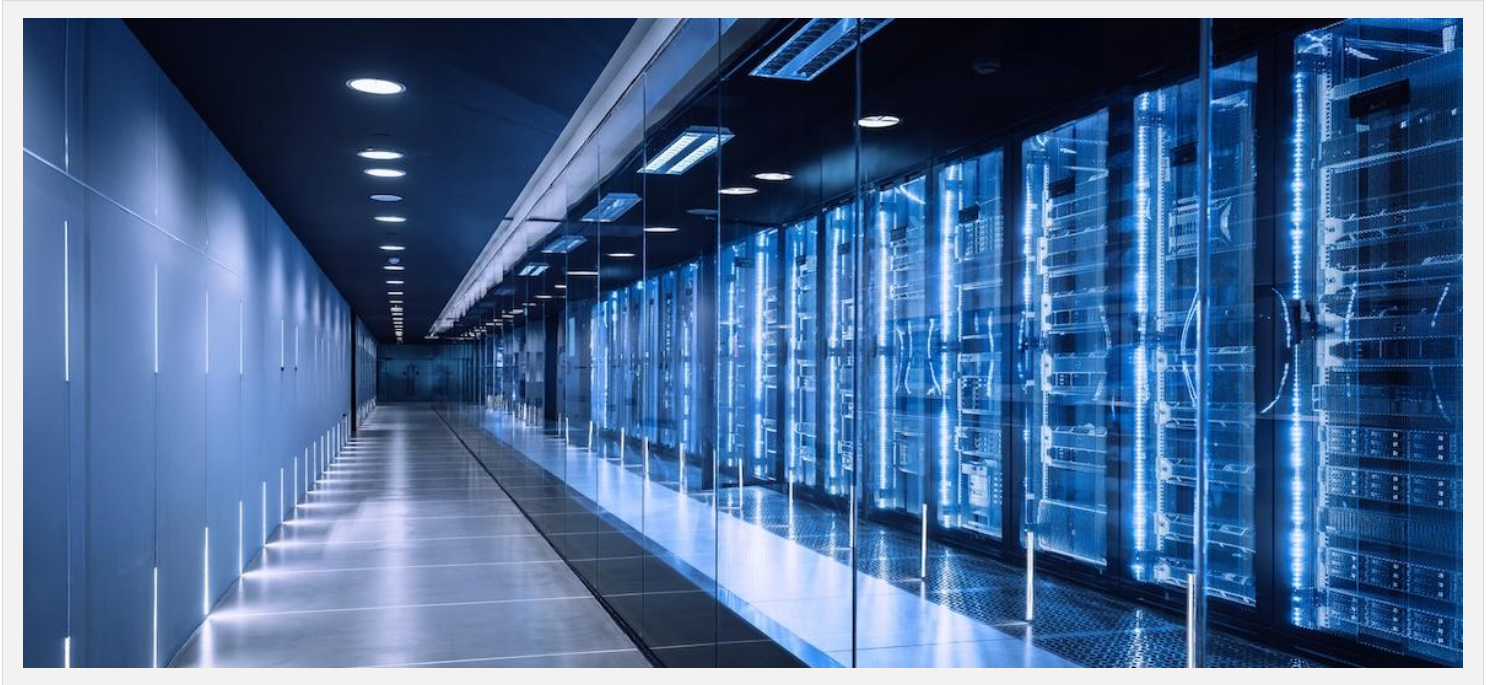
One of the most exacting global brands in technology was bringing the next phase of its new North Austin campus online, and the project was in trouble. The build was running three months behind schedule with six weeks until walk-down. The standard for finish quality, documentation, and on-site discipline was set at the level of the owner. Premier was brought in by the low voltage lead to help close it out clean.

OUR SCOPE

Premier inherited a build with copper and fiber roughed in through the third floor and partially through the fourth – half of it still needing termination, much of it requiring remediation. Our scope was to complete the remaining pulls, unwind miss pulls across prior work, terminate and test every run, certify the cabling against plans, activate the DAS systems, and close out the install. Dedicated fiber crew, project management, OT, and Sunday coverage staffed to the recovered calendar.

THE OUTCOME

Premier successfully compressed three months of work into six weeks. The project hit walk-down on the revised calendar with the punch list at zero. Premier is now in active discussions with the low voltage lead regarding additional partnership opportunities.



FEATURED PROJECT

Confidential Data Center

Ground-Up Security Build · Western US

LOCATION

Confidential

TIMELINE

Confidential

CUSTOMER TYPE

Private Data Center

ROLE

Retained by GC

THE BRIEF

A major enterprise data center operator was bringing a new facility online in the Mountain West and needed a ground-up physical security build designed for an operating environment where access had to be both unmistakable and unforgeable. The owner specified a layered identity stack, including biometrics, facial recognition, and credentialed access, installed and commissioned alongside site-wide video surveillance covering every approach, entry, and critical zone.

OUR SCOPE

Site-wide access control and surveillance install on the ground-up build. Final count included 350 devices, 600+ terminations. Enterprise IP cameras included facial recognition, license-plate-readers, long-range PTZ, parking-lot, and thermal IP categories. OpenPath smart readers across smart hubs for site-wide access control. At the data center perimeter, two MorphoWave biometric readers paired with Idemia VisionPass facial-recognition readers. Milestone XProtect Professional+ as the VMS, BriefCam Insights for forensic and real-time analytics, integrated visitor management at the front entry.

THE OUTCOME

Delivered as the first iteration of integrated physical security at the facility. The full layered access stack, including biometric, facial, credentialed, and video, commissioned, configured, and handed over operational. The owner and integration prime received a full closeout package: as-built drawings, device schedule, configuration documentation, and end-user training across all five platforms.

OUR CRAFTSMANSHIP

The proof is in the installation.

Manufacturer-certified terminations, dressed cabinets, documented runs. A capability brochure can promise quality, but the cabinet door must deliver it.



PARTNER WITH US

Selected list of our proud business partners.

A working selection of the customers and vendors who bring Premier DataCom back – across corporate headquarters, public infrastructure, multi-family properties, high-tech facilities, and more.

PROJECT OWNERS



GENERAL CONTRACTOR PARTNERS



TRUSTED VENDORS



Have a project where the work has to be right the first time?

CONTACT US

Ryan Willis
President, RCDD
ryan@premier-datacom.com

Chris Salazar
Head of Estimating
chris@premier-datacom.com

ADDRESS

8708 South Congress Ave, Suite A-100
Austin, TX 78745
737-615-7037 | premier-datacom.com